

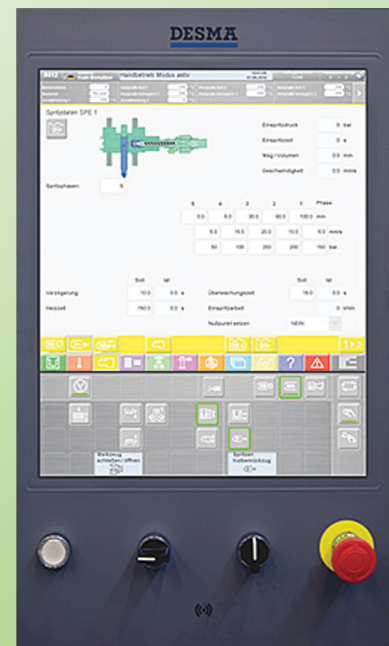
Coming Soon!
Expansion of our
Machine Park

DESMA Desma 968.400 ZO B750

We are proud to be able to introduce a new addition to our machine park, the DESMA 968.400 Zo B750, Estimated arrival at the beginning of the second quarter. This machine is designed for processing rubber by means of a belt infeed in "standing production". It will enable us to respond faster to ever increasing customer requirements.



Material processing: Elastomers
Closing force (kN): 4500
Tool height (mm): 180 - 660
Max. Injection volume (cm³): 5000
Belt Infeed



We are now even more flexible and versatile in the production of elastomer molded parts. We are just as well equipped for the ever increasing requirements in the low, medium and high voltage technology sector as also for the automotive and water / wastewater sectors.

If you need further information, please do not hesitate to ask us, we look forward to your E-Mail or call.

The KET -Team

