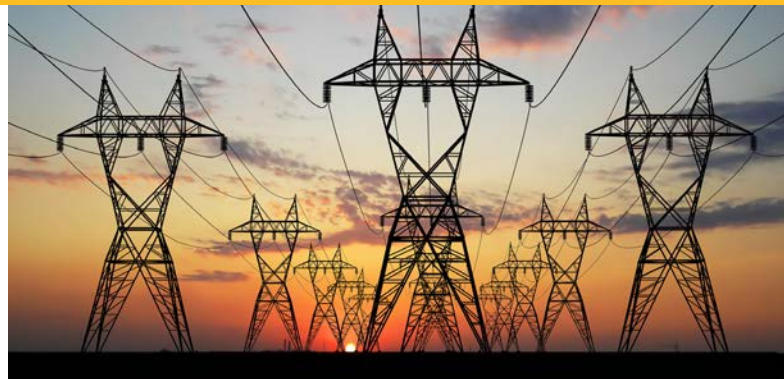


Energy- & Electrical engineering

Quality and innovation



Are you looking for a partner in energy and electrical engineering?

Then **We** are exactly the right Company for **you!**

RUBBER & SILICONE MATERIALS

Processing of conductive and insulating materials

KET Kunststoff- und Elasttechnik GmbH manufacture conductive components made of silicone and rubber for low, medium and high voltage technology. These include, for example, external and central electrodes, field control elements for the homogenization of electrical field lines, as well as smoothing sleeves and control end caps. The latter consist of a conductive core and an insulating jacket.

With all of these products, compliance with specified separations and tangential transitions is very important. Customer requirements such as „burr free“ - a shape without sharp edges, shoulders and electrically relevant transitions - are no strangers to us. We meet high requirements with our extensive know-how in this area.

Our range of services also includes the production of insulating, i.e. non-conductive, rubber and silicone components for low, medium and high voltage technology. These include insulator shields and insulators. They prevent moisture or dirt from getting between the components of the cable connections, and they also ensure electrical insulation. Another specialty of KET is the sheathing of surge arresters and a wide variety of isolators with silicone. Since voltages of more than 1,000 volts (1 kV) are present in high-voltage technology, compliance with exact specifications is of particular importance.

All of our form-related productions are customized and are accompanied by our development team. The choice of materials and mixtures, whether solid or liquid silicone (HTV * and LSR *), is done in close cooperation with you, our customer. Our service is as individual as your company. Get to know us and let us convince you of our competence and performance. We are looking forward to hear from you!

**HTV: High Temperature Vulcanization*

**LSR: Liquid Silicone Rubber*

Examples of some of our machines:

Maplan MBF 2000/250

- Processing of liquid silicone
- Max. Injection volume: 1,800 cm³
- Max. Clamping area: 500 mm x 900 mm
- Injection from below
- Closing direction: vertical

Desma 968.400 T

- Processing of liquid silicone
- Max. Injection volume: 3,300 cm³
- Max. Clamping area: 790 mm x 940 mm
- Injection from the side
- Closing direction: vertical

Desma 968.400 ZO Benchmark 750 (S2)

- Processing of solid silicone
- Max. Injection volume: 3,300 cm³
- Max. Clamping area: 670 mm x 780 mm
- Injection from above
- Closing direction: vertical

Your Contact:

Mrs. Rosalie Klose

Phone: +49 (0) 3528 43 80-23

Fax: +49 (0) 3528 43 80-25

rosalie.klose@ket-liegau.de

